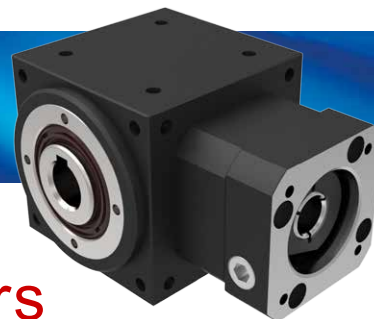


FT series



Indication of Model Numbers

FT	60	F	O	B	5	MOTOR
Type	Model	Input	Output	Bearing	Ratio	Motor Type
FT	60 70	F: Input Flange R44: Reducer 1-Stage: R44 · R62... 2-Stage: R44S · R62S... 2-Stage (A-Type) : R62A...	O: Hollow Shaft P: Fixing Flange C: Set Collar	B: Ball Bearing	2 3 4 5 10 15 20 25 30 40 50	

Model No.			1-Stage			2-Stage Unit		
			Ratio	60	70	Ratio	60	70
/ Rated Output Torque (Nominal output torque)	T_{2N}	Nm	2	15	22	10	15	22
			3	13	18	15	13	18
			4	13	18	20	13	18
			5	12	16	25	12	16
						30	13	18
						40	13	18
/ Max. Acceleration Torque	T_{2B}	Nm	2~5	1.5 Times of Rated Output Torque 10~50				
/ Rated Input Speed	n_{1N}	rpm	2~5	3,000	3,000	10~50	3,000	3,000
/ Max. Input Speed	n_{1B}	rpm	2~5	7,000	7,000	10~50	7,000	7,000
/ Backlash		arcmin	2~5	≤ 10	≤ 10	10~50	≤ 12	≤ 12
/ Max. Radial Force Ball Bearing	F_{2rB}	N	2~5	600	800	10~50	600	800
/ Max. Axial Force Ball Bearing	F_{2aB}	N	2~5	300	400	10~50	300	400
/ Service Life	L_H	hr	2~5 10~50	S5 Cycle Operation: >20,000 (S1 Continuous operation: >10,000 hrs)				
/ Efficiency	η	%	2~5	94% ~ 98%		10~50	90% ~ 94%	
/ Operating Temperature		°C	2~5 10~50	-10°C ~ +90°C				
/ Lubrication			2~5 10~50	Synthetic Grease				
/ Noise Level		dB	2~5	68	70	10~50	70	72

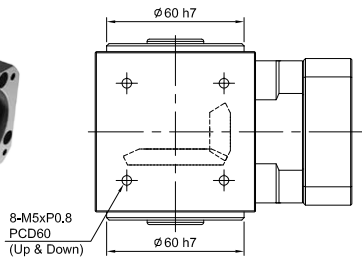
Mass Moments of Inertia (kgcm²)

Model No.		Unit	1-Stage			2-Stage		
			Ratio	60	70	Ratio	60	70
/ Mass Moments of Inertia	kgcm ²	Nm	2	0.32	0.80	10	0.04	0.10
			3	0.30	0.75	15	0.04	0.10
			4	0.30	0.70	20	0.04	0.10
			5	0.29	0.68	25	0.04	0.10
						30	0.04	0.10
						40	0.04	0.10
			50	0.04	0.10			

MODEL : FT-70

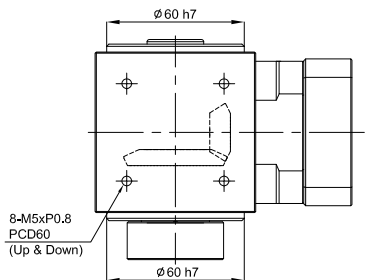
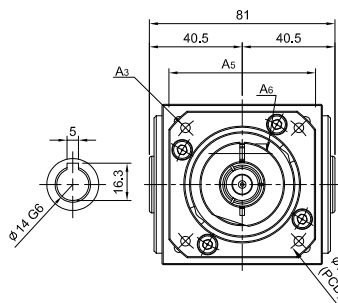
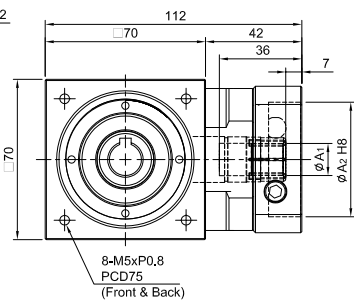
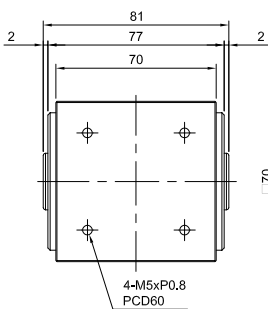
RATIO : 2.3.4.5 (1-Stage)

FT



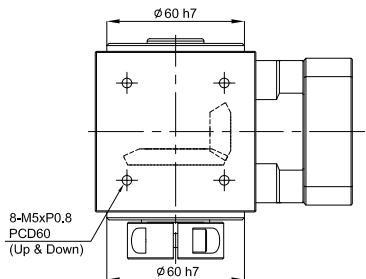
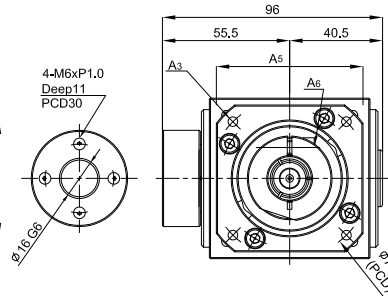
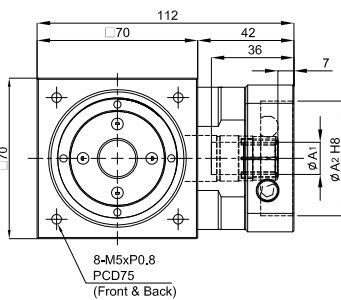
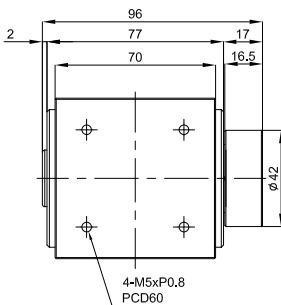
FT-FO
Input Flange
- Hollow Output Shaft

unit:mm	
Model Code	70
A1	14
A2	50 · 60 · 70
A3	M4 · M5 · M6
A4	70 · 75 · 90
A5	64 · 70 · 80
A6	M5 x P0.8

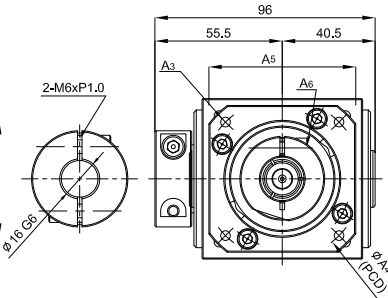
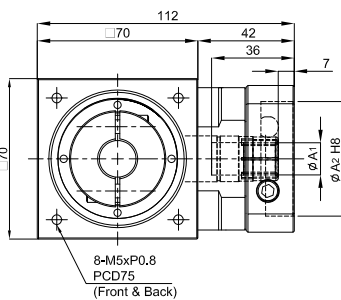
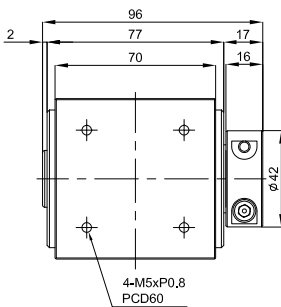


FT-FP
Input Flange - Fixing Flange

unit:mm	
Model Code	70
A1	14
A2	50 · 60 · 70
A3	M4 · M5 · M6
A4	70 · 75 · 90
A5	64 · 70 · 80
A6	M5 x P0.8

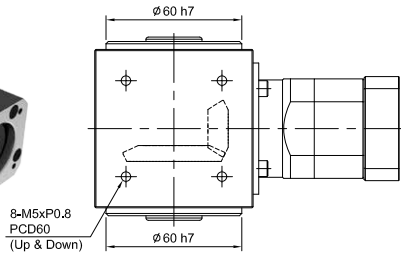


FT-FC
Input Flange - Set Collar



MODEL : FT-70

RATIO : 10.15.20.25.30.40.50 (2-Stage)

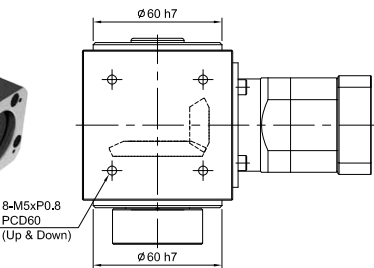
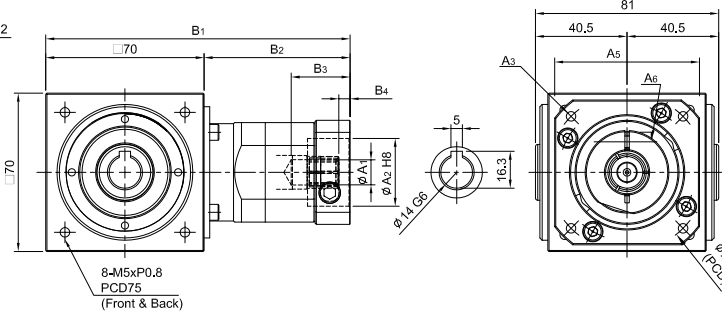
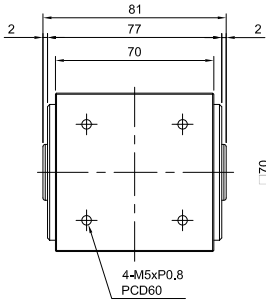


FT-RO

Fitted with Planetary
Reducer - Hollow Output
Shaft

unit:mm

Model Code	70	
A1	8 · 11	14
A2	30 · 40 · 50	50 · 60 · 70
A3	M3 · M4 · M5	M4 · M5 · M6
A4	46 · 60 · 63	70 · 75 · 90
A5	46 · 55	64 · 70 · 80
A6	M3 x P0.5	M5 x P0.8
B1	135	146
B2	65	76
B3	26	33.5
B4	5	6

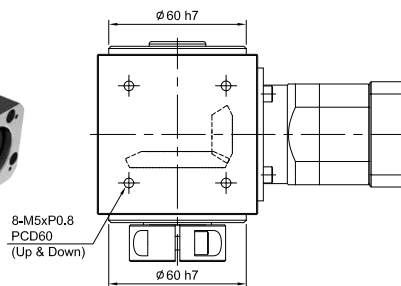
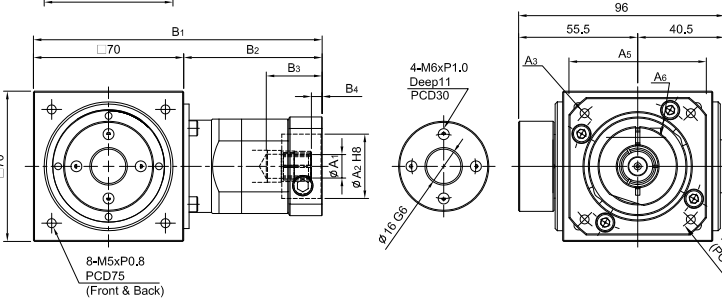
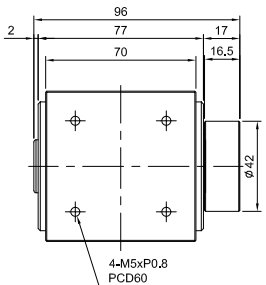


FT-RP

Fitted with Planetary
Reducer - Fixing Flange

unit:mm

Model Code	70	
A1	8 · 11	14
A2	30 · 40 · 50	50 · 60 · 70
A3	M3 · M4 · M5	M4 · M5 · M6
A4	46 · 60 · 63	70 · 75 · 90
A5	46 · 55	64 · 70 · 80
A6	M3 x P0.5	M5 x P0.8
B1	135	146
B2	65	76
B3	26	33.5
B4	5	6



FT-RC

Fitted with Planetary
Reducer - Set Collar

