

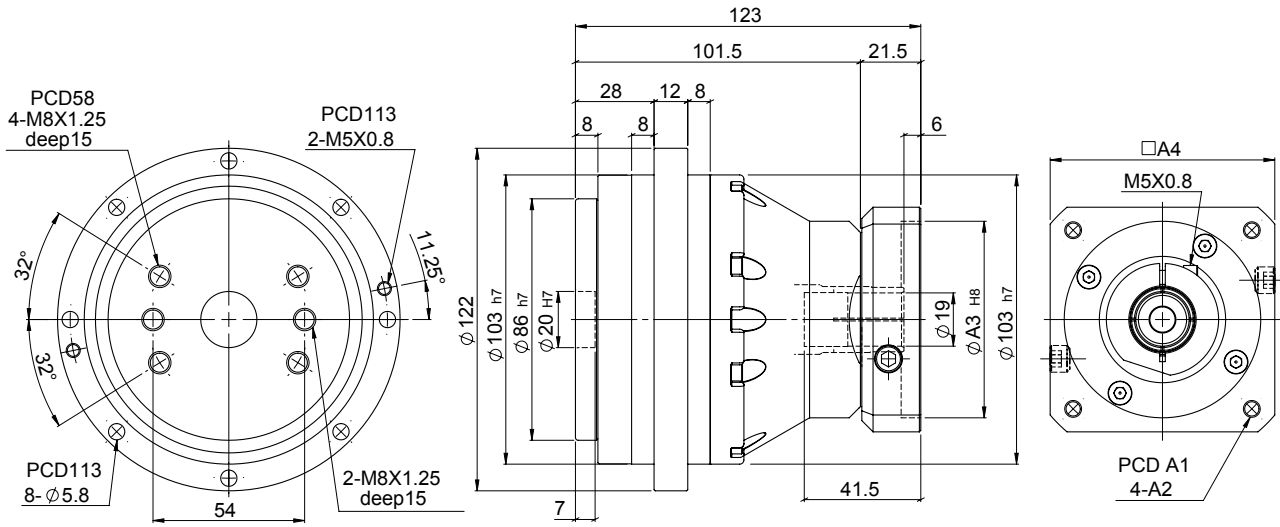
RDN

MODEL : RDN6

RATIO : 41、61、81、121、161

Unit: mm

| Model Code | RDN6 |
|------------|----------|
| A1 | 70、75、90 |
| A2 | M4、M5、M6 |
| A3 | 50、60、70 |
| A4 | 64、70、80 |



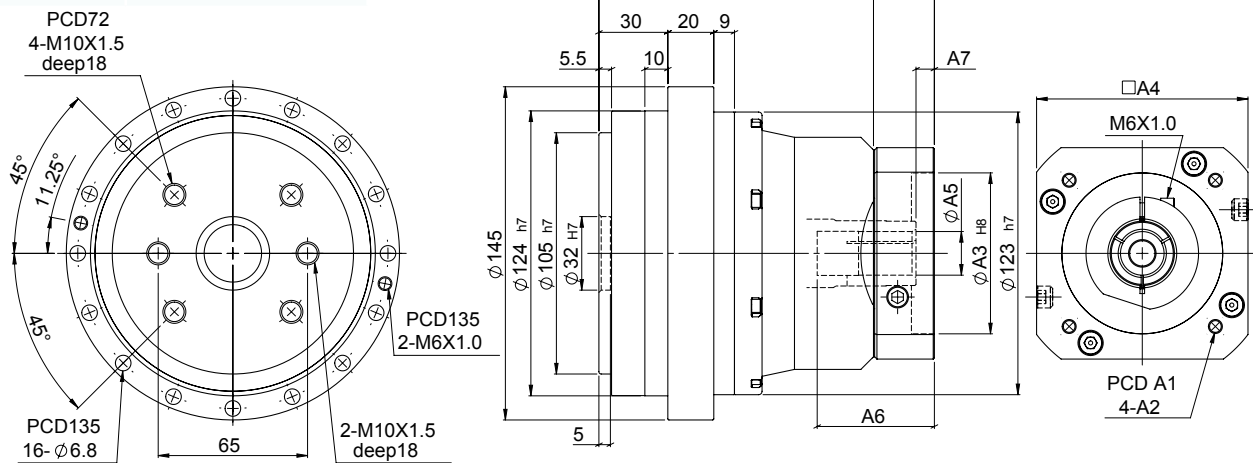
| Characteristic | | Unit | RDN6 |
|---------------------------------|------------|-------------------|--|
| Output Table Supporting Bearing | | | Angular Contact Ball Bearing |
| / Rated Output Torque | | Nm | 60 |
| / Max. Output Torque | T_{2NOT} | Nm | 5 Time of Rated Output Torque |
| / Emergency Stop Torque | | | |
| / Max. Acceleration Torque | T_{2B} | Nm | 2Times of Rated Output Torque |
| / Inertia Moment | | kg.m ² | 1.15×10^{-4} |
| / Rated Output Speed | | rpm | 15 |
| / Max. Output Speed | | rpm | 55 |
| / Permissible Input Speed | | rpm | 3,000 |
| / Backlash Ps | J_i | arcmin | ≤ 2 |
| / Backlash P0 | J_i | arcmin | ≤ 4 |
| / Backlash P1 | J_i | arcmin | ≤ 6 |
| / Max. Radial Force | F_{2rB} | N | 2,100 |
| / Max. Axial Force | F_{2aB} | N | 1,500 |
| / Rated Life | L_H | hr | S5 Cycle Operation: >6,000 (S1 Continuous Operation: >3,000 hrs) |
| / Torsional Rigidity | | Nm/arcmin | 50 |
| / Efficiency | η | % | ≥ 85 |
| / Synthetic Grease | | g | 100 |
| / Weight | | kg | 3.43 |

MODEL : RDN20

RATIO : 41、61、81、121、161

Unit: mm

| Model Code | RDN20 |
|------------|----------------|
| A1 | 90、100、115、145 |
| A2 | M5、M6、M8 |
| A3 | 70、80、95、110 |
| A4 | 92、110、130 |
| A5 | 19、24 |
| A6 | 51、63 |
| A7 | 8、20 |
| A8 | 26.5、38.5 |
| A9 | 146、158 |



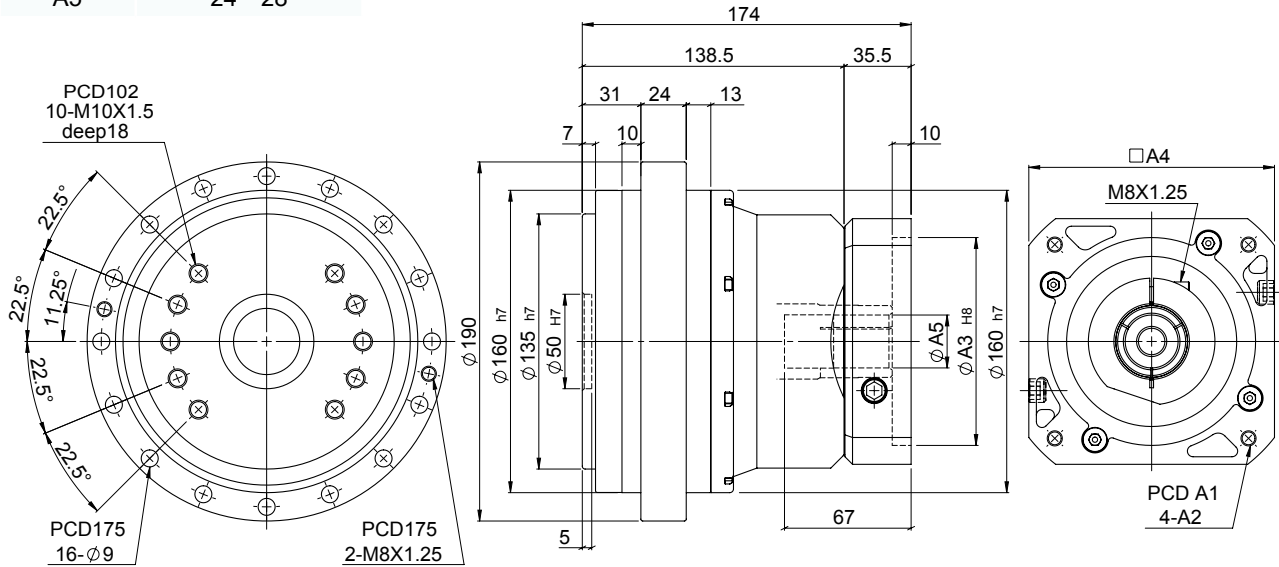
| Characteristic | | Unit | RDN20 |
|---------------------------------|------------|-------------------|--|
| Output Table Supporting Bearing | | | Angular Contact Ball Bearing |
| / Rated Output Torque | | Nm | 200 |
| / Max. Output Torque | T_{2NOT} | Nm | 5 Time of Rated Output Torque |
| / Emergency Stop Torque | | | |
| / Max. Acceleration Torque | T_{2B} | Nm | 2.5 Times of Rated Output Torque |
| / Inertia Moment | | kg.m ² | 2 x 10 ⁻⁴ |
| / Rated Output Speed | | rpm | 15 |
| / Max. Output Speed | | rpm | 50 |
| / Permissible Input Speed | | rpm | 3,000 |
| / Backlash Ps | J_i | arcmin | ≤ 1 |
| / Backlash P0 | J_i | arcmin | ≤ 3 |
| / Backlash P1 | J_i | arcmin | ≤ 5 |
| / Max. Radial Force | F_{2rB} | N | 6,500 |
| / Max. Axial Force | F_{2aB} | N | 4,300 |
| / Rated Life | L_H | hr | S5 Cycle Operation: >6,000 (S1 Continuous Operation: >3,000 hrs) |
| / Torsional Rigidity | | Nm/arcmin | 70 |
| / Efficiency | η | % | ≥ 85 |
| / Synthetic Grease | | g | 170 |
| / Weight | | kg | 6.43 |

MODEL : RDN40

RATIO : 41、61、81、121、161

Unit: mm

| Model Code | RDN40 |
|------------|-------------|
| A1 | 115、145、165 |
| A2 | M6、M8、M10 |
| A3 | 95、110、130 |
| A4 | 122、130、150 |
| A5 | 24、28 |



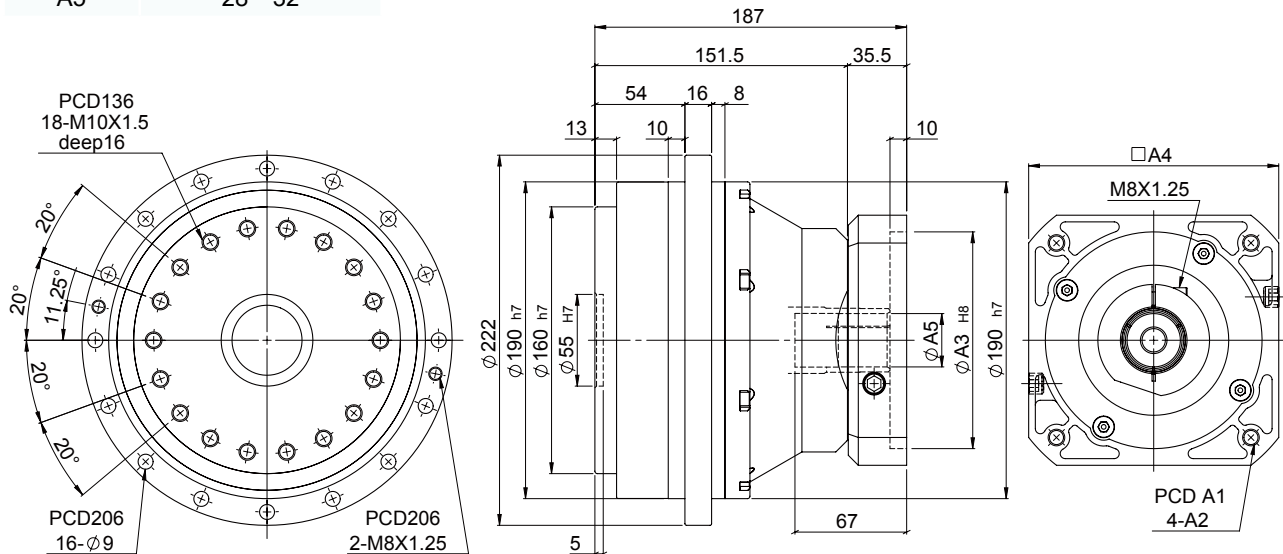
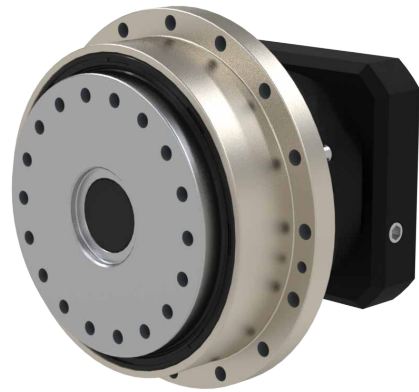
| Characteristic | | Unit | RDN40 |
|---------------------------------|------------|-------------------|--|
| Output Table Supporting Bearing | | | Angular Contact Ball Bearing |
| / Rated Output Torque | | Nm | 400 |
| / Max. Output Torque | T_{2NOT} | Nm | 5 Time of Rated Output Torque |
| / Emergency Stop Torque | | | |
| / Max. Acceleration Torque | T_{2B} | Nm | 2.5 Times of Rated Output Torque |
| / Inertia Moment | | kg.m ² | 5 x 10 ⁻⁴ |
| / Rated Output Speed | | rpm | 15 |
| / Max. Output Speed | | rpm | 45 |
| / Permissible Input Speed | | rpm | 3,000 |
| / Backlash Ps | J_i | arcmin | ≤ 1 |
| / Backlash P0 | J_i | arcmin | ≤ 3 |
| / Backlash P1 | J_i | arcmin | ≤ 5 |
| / Max. Radial Force | F_{2rB} | N | 8,600 |
| / Max. Axial Force | F_{2aB} | N | 5,700 |
| / Rated Life | L_H | hr | S5 Cycle Operation: >6,000 (S1 Continuous Operation: >3,000 hrs) |
| / Torsional Rigidity | | Nm/arcmin | 100 |
| / Efficiency | η | % | ≥ 85 |
| / Synthetic Grease | | g | 290 |
| / Weight | | kg | 11.3 |

MODEL : RDN80

RATIO : 45、66、81、101、171

Unit: mm

| Model Code | RDN80 |
|------------|-------------|
| A1 | 115、145、165 |
| A2 | M6、M8、M10 |
| A3 | 95、110、130 |
| A4 | 122、130、150 |
| A5 | 28、32 |



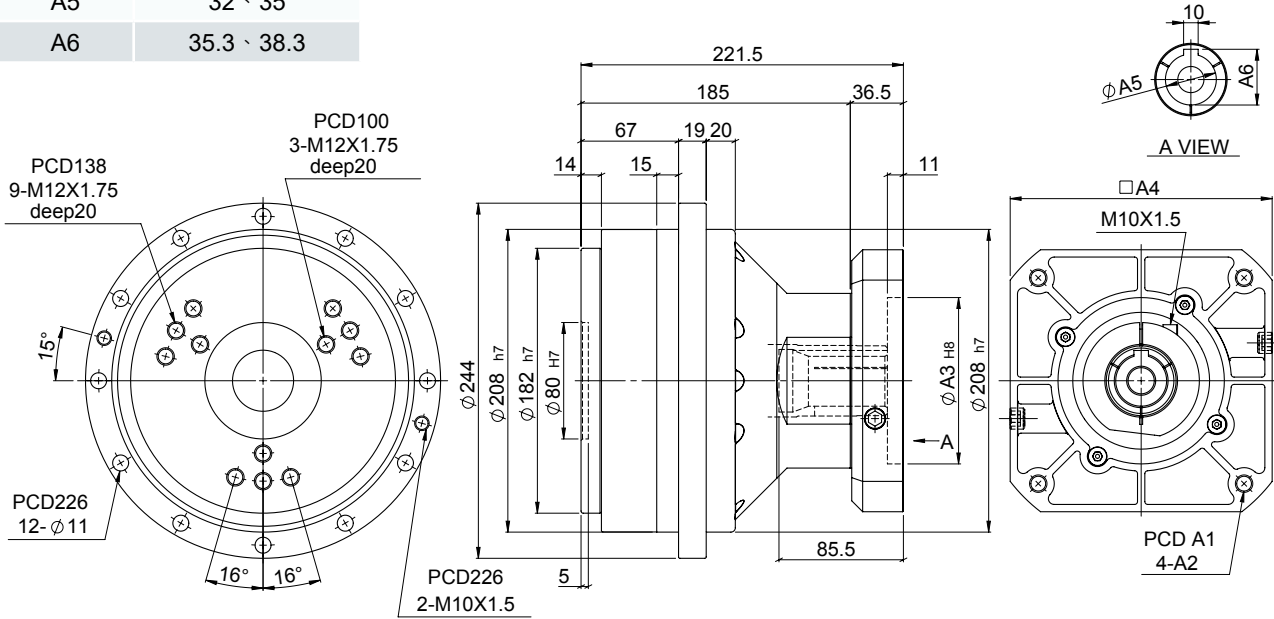
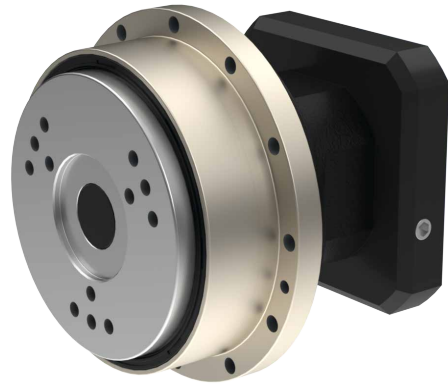
| Characteristic | | Unit | RDN80 |
|---------------------------------|------------|-------------------|--|
| Output Table Supporting Bearing | / | | Angular Contact Ball Bearing |
| / Rated Output Torque | | Nm | 800 |
| / Max. Output Torque | T_{2NOT} | Nm | 5 Time of Rated Output Torque |
| / Emergency Stop Torque | | | |
| / Max. Acceleration Torque | T_{2B} | Nm | 2.5 Times of Rated Output Torque |
| / Inertia Moment | | kg.m ² | 9 x 10 ⁻⁴ |
| / Rated Output Speed | | rpm | 15 |
| / Max. Output Speed | | rpm | 42 |
| / Permissible Input Speed | | rpm | 3,000 |
| / Backlash Ps | J_i | arcmin | ≤ 1 |
| / Backlash P0 | J_i | arcmin | ≤ 3 |
| / Backlash P1 | J_i | arcmin | ≤ 5 |
| / Max. Radial Force | F_{2rB} | N | 12,500 |
| / Max. Axial Force | F_{2aB} | N | 8,200 |
| / Rated Life | L_H | hr | S5 Cycle Operation: >6,000 (S1 Continuous Operation: >3,000 hrs) |
| / Torsional Rigidity | | Nm/arcmin | 150 |
| / Efficiency | η | % | ≥ 85 |
| / Synthetic Grease | | g | 480 |
| / Weight | | kg | 18.64 |

MODEL : RDN110

RATIO : 41、61、81、121、161

Unit: mm

| Model Code | RDN110 |
|------------|-------------|
| A1 | 145、165、200 |
| A2 | M8、M10、M12 |
| A3 | 110、130、180 |
| A4 | 130、150、190 |
| A5 | 32、35 |
| A6 | 35.3、38.3 |



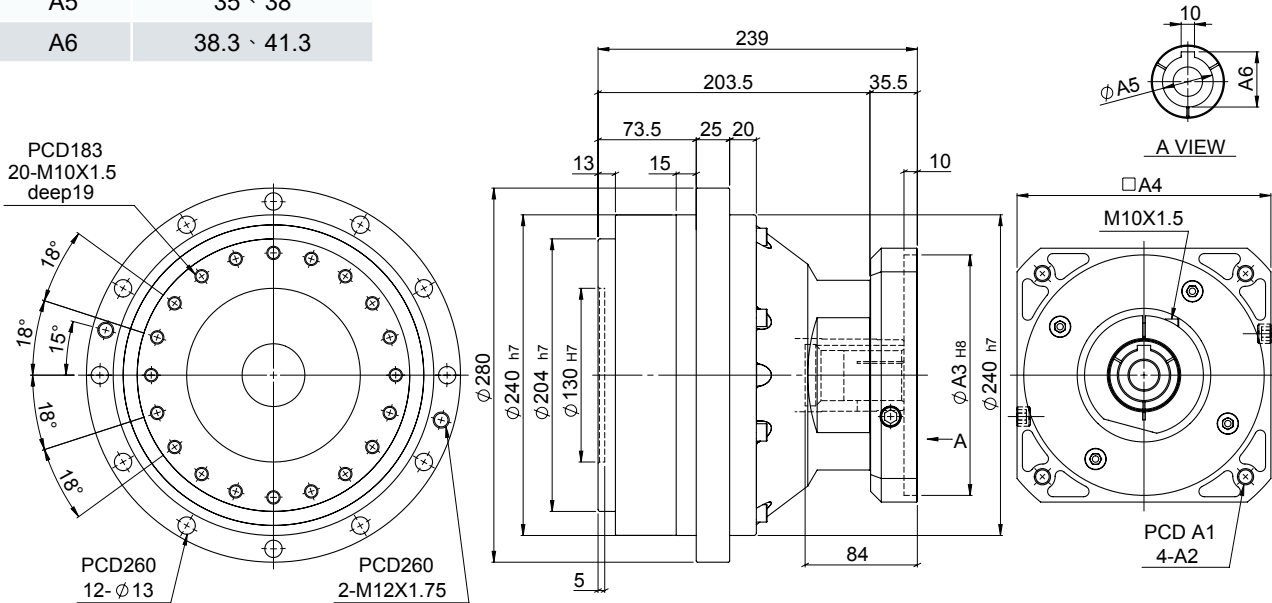
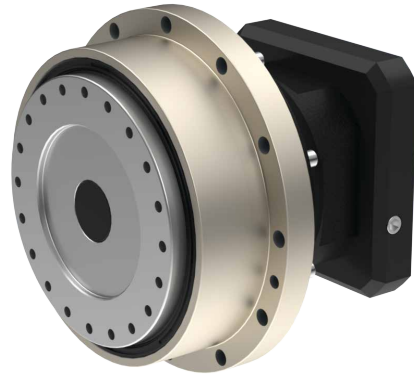
| Characteristic | | Unit | RDN110 |
|---------------------------------|------------|-------------------|--|
| Output Table Supporting Bearing | | | Angular Contact Ball Bearing |
| / Rated Output Torque | | Nm | 1,100 |
| / Max. Output Torque | T_{2NOT} | Nm | 5 Time of Rated Output Torque |
| / Emergency Stop Torque | | | |
| / Max. Acceleration Torque | T_{2B} | Nm | 2.5 Times of Rated Output Torque |
| / Inertia Moment | | kg.m ² | 15 x 10 ⁻⁴ |
| / Rated Output Speed | | rpm | 15 |
| / Max. Output Speed | | rpm | 35 |
| / Permissible Input Speed | | rpm | 3,000 |
| / Backlash Ps | J_i | arcmin | ≤ 1 |
| / Backlash P0 | J_i | arcmin | ≤ 3 |
| / Backlash P1 | J_i | arcmin | ≤ 5 |
| / Max. Radial Force | F_{2rB} | N | 16,000 |
| / Max. Axial Force | F_{2aB} | N | 12,000 |
| / Rated Life | L_H | hr | S5 Cycle Operation: >6,000 (S1 Continuous Operation: >3,000 hrs) |
| / Torsional Rigidity | | Nm/arcmin | 210 |
| / Efficiency | η | % | ≥ 85 |
| / Synthetic Grease | | g | 710 |
| / Weight | | kg | 26.8 |

MODEL : RDN160

RATIO : 41、61、81、121、161

Unit: mm

| Model Code | RDN160 |
|------------|---------------|
| A1 | 165、200、215 |
| A2 | M8、M10、M12 |
| A3 | 114.3、130、180 |
| A4 | 182、200 |
| A5 | 35、38 |
| A6 | 38.3、41.3 |



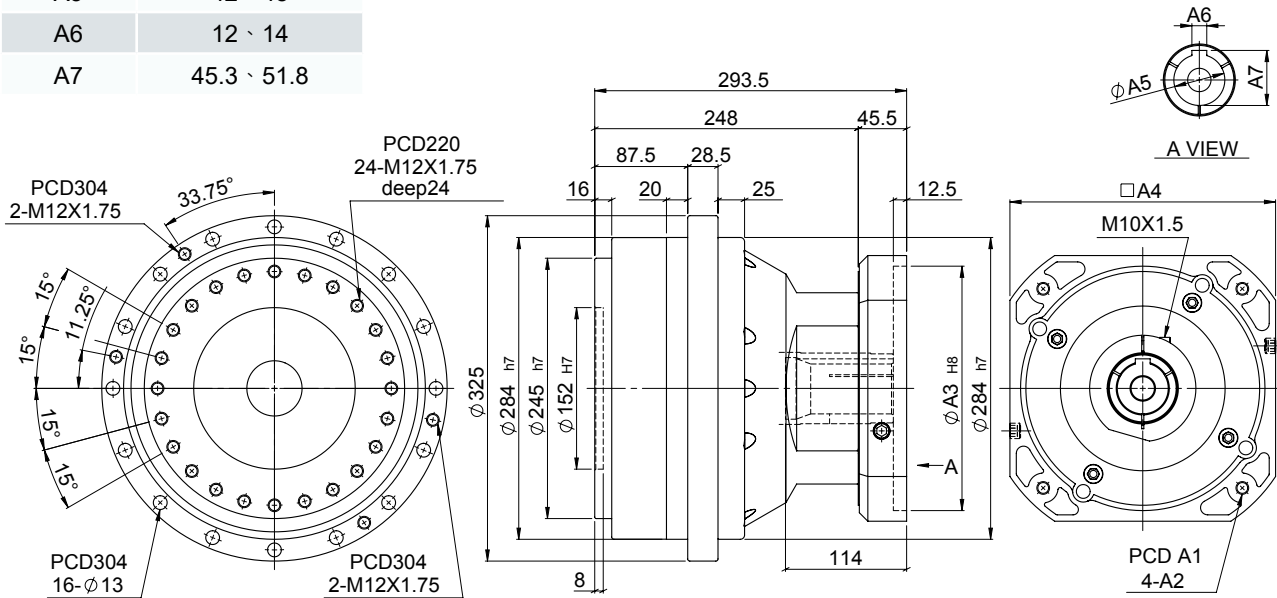
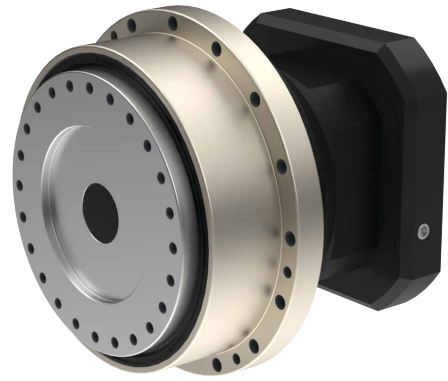
| Characteristic | | Unit | RDN160 |
|---------------------------------|------------|-------------------|--|
| Output Table Supporting Bearing | | | Angular Contact Ball Bearing |
| / Rated Output Torque | | Nm | 1,600 |
| / Max. Output Torque | T_{2NOT} | Nm | 5 Time of Rated Output Torque |
| / Emergency Stop Torque | | | |
| / Max. Acceleration Torque | T_{2B} | Nm | 2.5 Times of Rated Output Torque |
| / Inertia Moment | | kg.m ² | 25 x 10 ⁻⁴ |
| / Rated Output Speed | | rpm | 15 |
| / Max. Output Speed | | rpm | 27 |
| / Permissible Input Speed | | rpm | 3,000 |
| / Backlash Ps | J_i | arcmin | ≤ 1 |
| / Backlash P0 | J_i | arcmin | ≤ 3 |
| / Backlash P1 | J_i | arcmin | ≤ 5 |
| / Max. Radial Force | F_{2rB} | N | 19,000 |
| / Max. Axial Force | F_{2aB} | N | 15,000 |
| / Rated Life | L_H | hr | S5 Cycle Operation: >6,000 (S1 Continuous Operation: >3,000 hrs) |
| / Torsional Rigidity | | Nm/arcmin | 300 |
| / Efficiency | η | % | ≥ 85 |
| / Synthetic Grease | | g | 800 |
| / Weight | | kg | 36.4 |

MODEL : RDN320

RATIO : 41、61、81、121、161

Unit: mm

| Model Code | RDN320 |
|------------|---------------|
| A1 | 200、215、265 |
| A2 | M10、M12、M16 |
| A3 | 114.3、180、230 |
| A4 | 182、200、250 |
| A5 | 42、48 |
| A6 | 12、14 |
| A7 | 45.3、51.8 |



| Characteristic | | Unit | RDN320 |
|---------------------------------|------------|-------------------|--|
| Output Table Supporting Bearing | | | Angular Contact Ball Bearing |
| / Rated Output Torque | | Nm | 3,200 |
| / Max. Output Torque | T_{2NOT} | Nm | 5 Time of Rated Output Torque |
| / Emergency Stop Torque | | | |
| / Max. Acceleration Torque | T_{2B} | Nm | 2.5 Times of Rated Output Torque |
| / Inertia Moment | | kg.m ² | 32 x 10 ⁻⁴ |
| / Rated Output Speed | | rpm | 15 |
| / Max. Output Speed | | rpm | 21 |
| / Permissible Input Speed | | rpm | 3,000 |
| / Backlash Ps | J_i | arcmin | ≤ 1 |
| / Backlash P0 | J_i | arcmin | ≤ 3 |
| / Backlash P1 | J_i | arcmin | ≤ 5 |
| / Max. Radial Force | F_{2rB} | N | 25,300 |
| / Max. Axial Force | F_{2aB} | N | 20,000 |
| / Rated Life | L_H | hr | S5 Cycle Operation: >6,000 (S1 Continuous Operation: >3,000 hrs) |
| / Torsional Rigidity | | Nm/arcmin | 980 |
| / Efficiency | η | % | ≥ 85 |
| / Synthetic Grease | | g | 1,700 |
| / Weight | | kg | 62.7 |