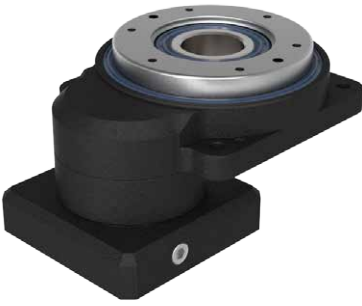


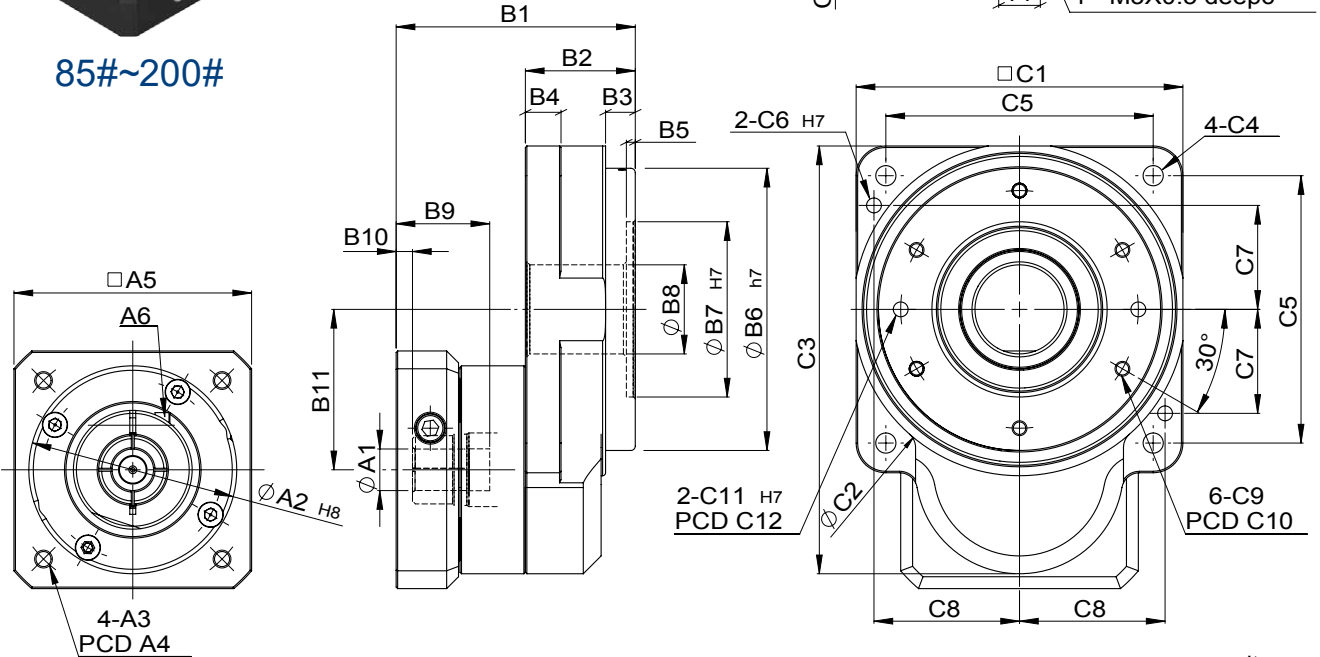
# MODEL : GT-C

RATIO : 5.10.18 ( 1-Stage)

GT



85#~200#



unit: mm

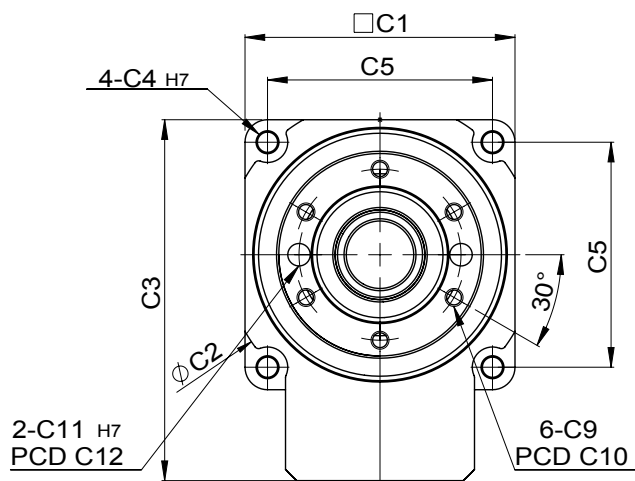
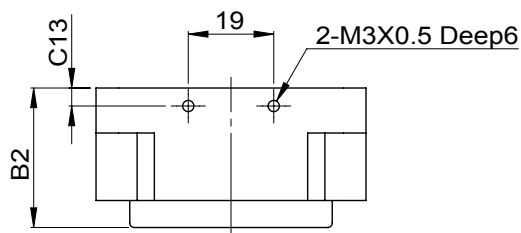
Model Code	60	85	110	135	170	200	
A	A1	8	8 · 14	14	14 · 19	19 · 24	
	A2	30 · 40 · 50	30 · 40 · 50	50 · 60 · 70	50 · 60 · 70	70 · 80 · 95 · 110	70 · 80 · 95 · 110
	A3	M3 · M4 · M5	M3 · M4 · M5	M4 · M5 · M6	M4 · M5 · M6	M5 · M6 · M8	M5 · M6 · M8
	A4	46 · 63 · 60	46 · 63 · 60	70 · 75 · 90	70 · 75 · 90	90 · 100 · 115 · 145	90 · 100 · 115 · 145
	A5	46 · 55	46 · 55	64 · 70 · 80	64 · 70 · 80	92 · 110 · 130	92 · 110 · 130
	A6	M4 x 0.7	M4 x 0.7	M5 x 0.8	M5 x 0.8	M6 x 1.0	M6 x 1.0
B	B1	66	78.5	82.5	98	115.5 · 128.5	113.5 · 127.5
	B2	31	36.5	37	42	60	58
	B3	6	13.5	10	9	6	18
	B4	10	10	12	15	36	20
	B5	2	3	3	3	6	4
	B6	45	70	95	115	135	170
	B7	30	52	59	92	104	120
	B8	15	22	30	50	85	75
	B9	26.5	31	31.5	41	44.5 · 57.5	44.5 · 57.5
	B10	6.5	5	5.5	6	8.5 · 7.5	8.5 · 7.5
	B11	29.2	41.6	54	66.6	92.5	92.5
C	C1	60	85	110	135	170	200
	C2	69	87	112	138	176	202
	C3	80.2	110.1	144	169.1	227.5	242.5
	C4	4.5	5.5	6.8	9	11	11
	C5	50	70	90	110	145	170
	C6	-	4	5	5	6	8
	C7	-	28	35	45	60	68
	C8	-	38	49	60	72.5	85
	C9	M4 x 0.7	M4 x 0.7	M5 x 0.8	M5 x 0.8	M8 x 1.25	M6 x 1.0
	C10	38	62.5	80	104	120	155
	C11	5 deep6	5 deep6	5 deep6	5 deep5	6 deep8	8 deep8
	C12	36	62.5	80	104	120	155
	C13	4	4	5	5.5	-	9
	C14	-	5	4.5	4	-	12

# Characteristic of GT-C 1-Stage Series

## GT-C



60#



## GT-C 1-Stage

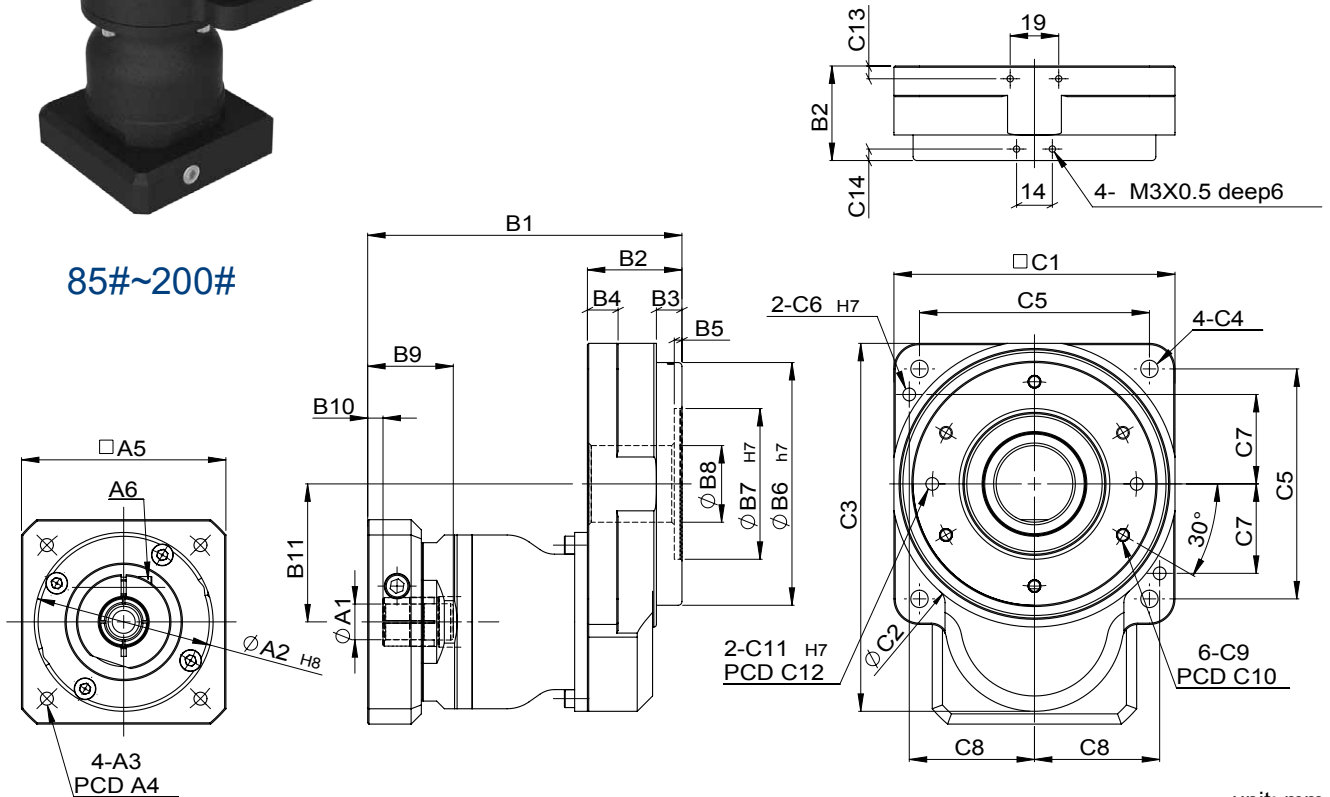
Characteristic		Unit	Ratio	60C	85C	110C	135C	170C	200C
Output Table Supporting Bearing			5~18	/ Crossed Roller Bearing					
/ Rated Output Torque (Nominal output torque)	$T_{2N}$	Nm	5	5	18	33	43	100	142
			10	4	14	26	34	-	112
			18	3	10	19	25	-	85
/ Max. Acceleration Torque	$T_{2B}$	Nm	5~18	1.5 Times of Rated Output Torque					
/ Max. Output Torque / Emergency Stop Torque	$T_{2NOT}$	Nm	5~18	2 Times of Rated Output Torque					
/ Inertia Moment		kg.m <sup>2</sup>	5~18	$735 \times 10^{-7}$	$1203 \times 10^{-6}$	$1483 \times 10^{-6}$	$2772 \times 10^{-6}$	$27619 \times 10^{-6}$	$27619 \times 10^{-6}$
/ Output Permissible Speed		rpm	5~18	200	200	200	200	200	200
/ Torsional Backlash		arcmin	5~18	$\leq 1$	$\leq 1$	$\leq 1$	$\leq 1$	$\leq 1$	$\leq 1$
/ Lost Motion		arcmin	5~18	2(0.033°)					
Repetitive Positioning Accuracy		arcsec	5~18	$\pm 10(0.0028^\circ)$					
/ Permissible Thrust Load		N	5~18	500	900	1200	2200	4000	4000
/ Permissible Moment Load		Nm	5~18	10	18	24	45	65	80
/ Runout of Output Table Surface		mm	5~18	0.01	0.01	0.015	0.015	0.02	0.02
Runout of Output Table Inner / Outer Diameter		mm	5~18	0.01	0.01	0.015	0.015	0.02	0.02
/ Parallelism of Output Table		mm	5~18	0.02	0.02	0.025	0.025	0.03	0.03
/ Weight		Kg	5~18	0.62	1.1	2.04	3.13		8.66

# MODEL : GT-C

RATIO : 25.50.100 ( 2-Stage)



85#~200#



unit: mm

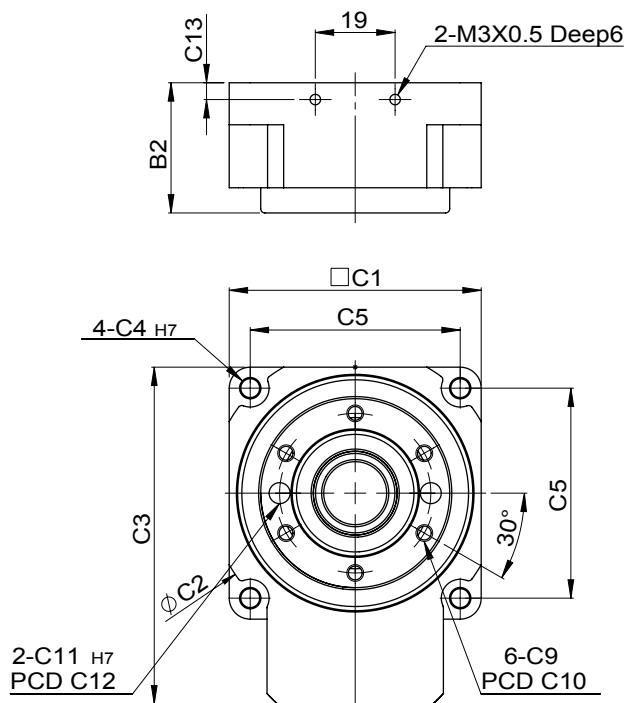
Model Code	60	85	110	135	170	200	
<b>A</b>	A1	8	14	14	14	19	
	A2	30 · 40 · 50	30 · 40 · 50	50 · 60 · 70	50 · 60 · 70	50 · 60 · 70	50 · 60 · 70
	A3	M3 · M4 · M5	M3 · M4 · M5	M4 · M5 · M6	M4 · M5 · M6	M4 · M5 · M6	M4 · M5 · M6
	A4	46 · 63 · 60	46 · 63 · 60	70 · 75 · 90	70 · 75 · 90	70 · 75 · 90	70 · 75 · 90
	A5	46 · 55	46 · 55	64 · 70 · 80	64 · 70 · 80	64 · 70 · 80	64 · 70 · 80
	A6	M4 x 0.7	M4 x 0.7	M5 x 0.8	M5 x 0.8	M5 x 0.8	M5 x 0.8
<b>B</b>	B1	103	108.5	123	128	156.5	154.5
	B2	31	36.5	37	42	60	58
	B3	6	13.5	10	9	6	18
	B4	10	10	12	15	36	20
	B5	2	3	3	3	6	4
	B6	45	70	95	115	135	170
	B7	30	52	59	92	104	120
	B8	15	22	30	50	85	75
	B9	32	32	33.5	33.5	45.5	45.5
	B10	4.5	5	6	6	10	10
	B11	29.2	41.6	54	66.6	92.5	92.5
<b>C</b>	C1	60	85	110	135	170	200
	C2	69	87	112	138	176	202
	C3	80.2	110.1	144	169.1	227.5	242.5
	C4	4.5	5.5	6.8	9	11	11
	C5	50	70	90	110	145	170
	C6	-	4	5	5	6	8
	C7	-	28	35	45	60	68
	C8	-	38	49	60	72.5	85
	C9	M4 x 0.7	M4 x 0.7	M5 x 0.8	M5 x 0.8	M8 x 1.25	M6 x 1.0
	C10	38	62.5	80	104	120	155
	C11	5 deep6	5 deep6	5 deep6	5 deep5	6 deep8	8 deep8
	C12	36	62.5	80	104	120	155
	C13	4	4	5	5.5	-	9
	C14	-	5	4.5	4	-	12

# Characteristic of GT-C 2-Stage Series

## GT-C



60#



### GT-C

### 2-Stage

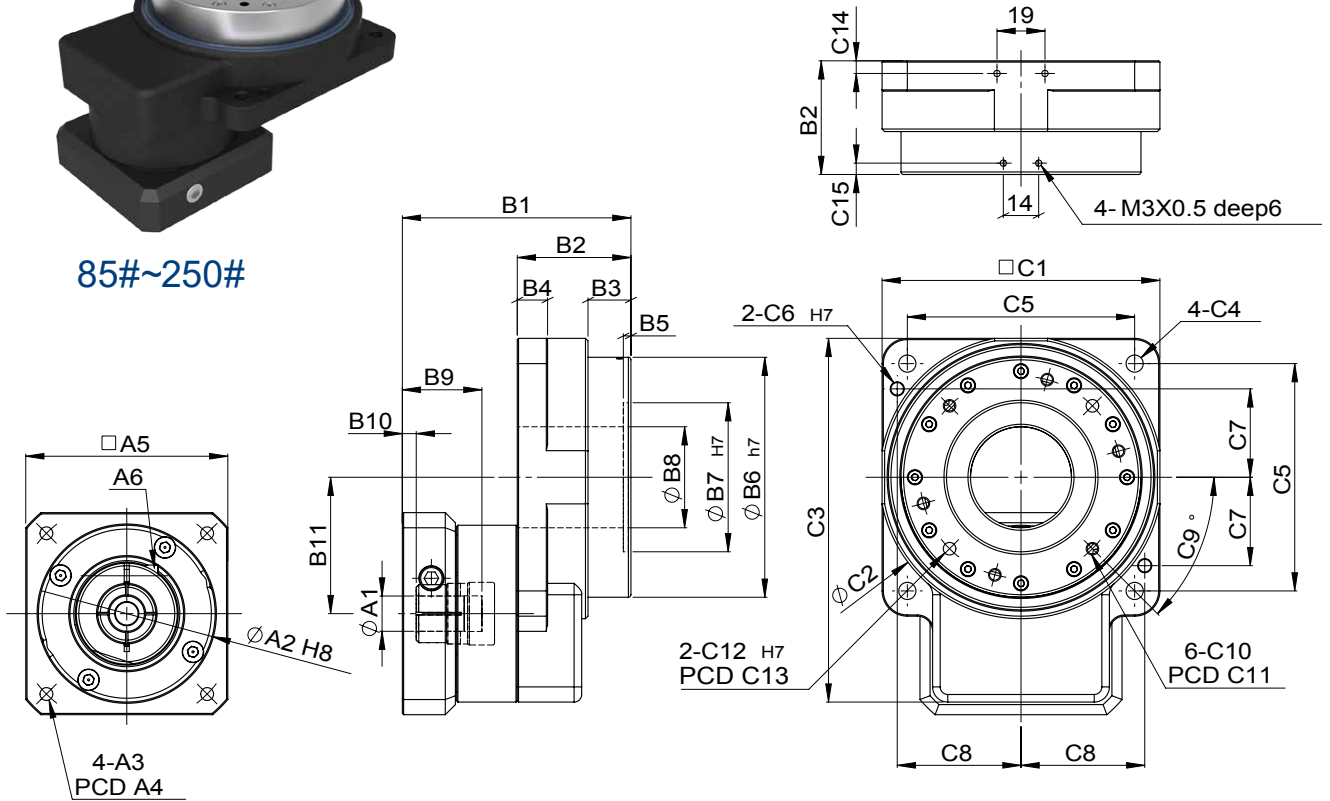
Characteristic		Unit	Ratio	60C	85C	110C	135C	170C	200C
Output Table Supporting Bearing			25~100	/ Crossed Roller Bearing					
/ Rated Output Torque (Nominal output torque)	$T_{2N}$	Nm	25	5	18	33	43	100	142
			50	4	14	26	34	-	112
			100	4	14	26	34	-	112
/ Max. Acceleration Torque	$T_{2B}$	Nm	25~100	1.5 Times of Rated Output Torque					
/ Max. Output Torque / Emergency Stop Torque	$T_{2NOT}$	Nm	25~100	2 Times of Rated Output Torque					
/ Inertia Moment		kg.m <sup>2</sup>	25~100	$735 \times 10^{-7}$	$1203 \times 10^{-6}$	$1483 \times 10^{-6}$	$2772 \times 10^{-6}$	$27619 \times 10^{-6}$	$27619 \times 10^{-6}$
/ Output Permissible Speed		rpm	25~100	200	200	200	200	200	200
/ Torsional Backlash		arcmin	25~100	$\leq 2$	$\leq 2$	$\leq 2$	$\leq 2$	$\leq 2$	$\leq 2$
/ Lost Motion		arcmin	25~100	3(0.05°)					
Repetitive Positioning Accuracy		arcsec	25~100	$\pm 15(0.0042^\circ)$					
/ Permissible Thrust Load		N	25~100	500	900	1200	2200	4000	4000
/ Permissible Moment Load		Nm	25~100	10	18	24	45	65	80
/ Runout of Output Table Surface		mm	25~100	0.01	0.01	0.015	0.015	0.02	0.02
Runout of Output Table Inner / Outer Diameter		mm	25~100	0.01	0.01	0.015	0.015	0.02	0.02
/ Parallelism of Output Table		mm	25~100	0.02	0.02	0.025	0.025	0.03	0.03
/ Weight		Kg	25~100	1.1	1.78	3.51	4.21	10.3	10.3

# MODEL : GT-H

RATIO : 10.18 ( 1-Stage)



85#~250#



unit: mm

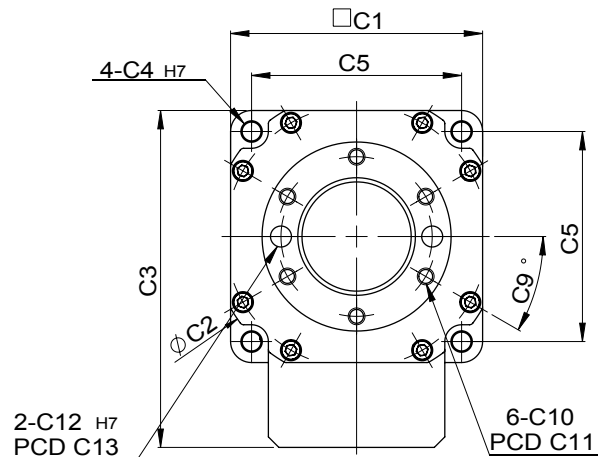
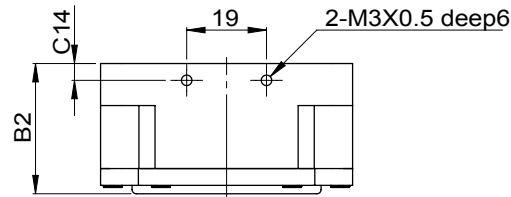
Model Code	60	85	110	135	200	250	
<b>A</b>	A1	8	8 · 14	14	14 · 19	19 · 24	35
	A2	30 · 40 · 50	30 · 40 · 50	50 · 60 · 70	50 · 60 · 70	70 · 80 · 95 · 110	95 · 110 · 114.3
	A3	M3 · M4 · M5	M3 · M4 · M5	M4 · M5 · M6	M4 · M5 · M6	M5 · M6 · M8	M6 · M8 · M12
	A4	46 · 63 · 60	46 · 63 · 60	70 · 75 · 90	70 · 75 · 90	90 · 100 · 115 · 145	115 · 145 · 200
	A5	46 · 55	46 · 55	64 · 70 · 80	64 · 70 · 80	92 · 110 · 130	122 · 130 · 180
	A6	M4 x 0.7	M4 x 0.7	M5 x 0.8	M5 x 0.8	M6 x 1.0	M10 x 1.5
<b>B</b>	B1	66	78.5	90.5	104	125.5 · 139.5	184
	B2	31	38.5	45	48	70	84
	B3	6	13	17	12	25	27.5
	B4	10	10	12	15	20	25
	B5	2	3	3	3	4	5
	B6	45	70	95	115	170	218
	B7	-	52	59	92	140	160
	B8	26	33	40	63	100	120
	B9	26.5	31	31.5	41	44.5 · 57.5	82
	B10	6.5	5	5.5	6	8.5 · 7.5	10
	B11	29.2	41.6	54	66.6	98.5	122
<b>C</b>	C1	60	85	110	135	200	250
	C2	69	87	112	138	202	254
	C3	80.2	110.1	144	169.1	248.5	307
	C4	4.5	5.5	6.8	9	11	13
	C5	50	70	90	110	170	220
	C6	-	4	5	5	8	10
	C7	-	28	35	45	68	90
	C8	-	38	49	60	85	110
	C9	30	30	45	30	30	30
	C10	M4 x 0.7	M4 x 0.7	M5 x 0.8	M5 x 0.8	M6 x 1.0	M8 x 1.25
	C11	38	62.5	80	104	155	200
	C12	5 deep6	5 deep6	5 deep5	5 deep5	8 deep8	8 deep14.5
	C13	36	62.5	80	104	155	200
	C14	4	4	5	5.5	9	9
	C15	-	5	4.5	6	12	8

# Characteristic of GT-H 1-Stage Series

## GT-H



60#



## GT-H 1-Stage

Characteristic		Unit	Ratio	60H	85H	110H	135H	200H	250H
Output Table Supporting Bearing			10 · 18	/ Ball Bearing	/ Crossed Roller Bearing				
/ Rated Output Torque (Nominal output torque)	$T_{2N}$	Nm	10 18	4 3	14 10	26 19	34 25	183 128	334 234
/ Max. Acceleration Torque	$T_{2B}$	Nm	10 · 18	1.5 Times of Rated Output Torque					
/ Max. Output Torque / Emergency Stop Torque	$T_{2NOT}$	Nm	10 · 18	2 Times of Rated Output Torque					
/ Inertia Moment		kg·m <sup>2</sup>	10 · 18	777 x 10 <sup>-7</sup>	1203 x 10 <sup>-6</sup>	1483 x 10 <sup>-6</sup>	2772 x 10 <sup>-6</sup>	27619 x 10 <sup>-6</sup>	53551 x 10 <sup>-6</sup>
/ Output Permissible Speed		rpm	10 · 18	300	200	200	200	200	200
/ Torsional Backlash		arcmin	10 · 18	≤ 1	≤ 1	≤ 1	≤ 1	≤ 1	≤ 1
/ Lost Motion		arcmin	10 · 18	2(0.033°)					
Repetitive Positioning Accuracy		arcsec	10 · 18	±10(0.0028°)					
/ Permissible Thrust Load		N	10 · 18	350	900	1200	2200	4000	5060
/ Permissible Moment Load		Nm	10 · 18	7	18	24	45	120	100
/ Runout of Output Table Surface		mm	10 · 18	0.01	0.01	0.015	0.015	0.02	0.025
Runout of Output Table Inner / Outer Diameter		mm	10 · 18	0.01	0.01	0.015	0.015	0.02	0.025
/ Parallelism of Output Table		mm	10 · 18	0.02	0.02	0.025	0.025	0.03	0.035
/ Weight		Kg	10 · 18					9.7	20.1

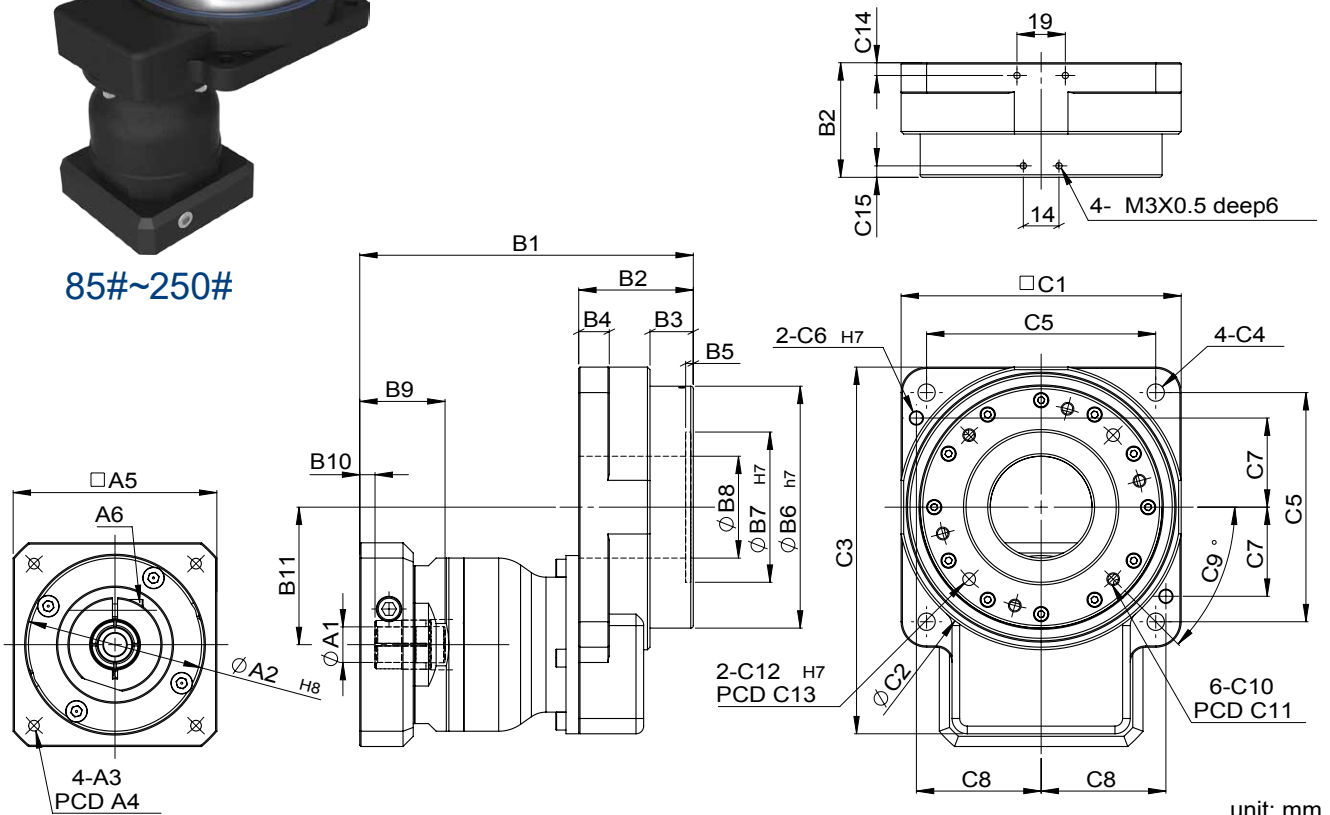
# MODEL : GT-H

RATIO : 50.100 ( 2-Stage)

GT



85#~250#



unit: mm

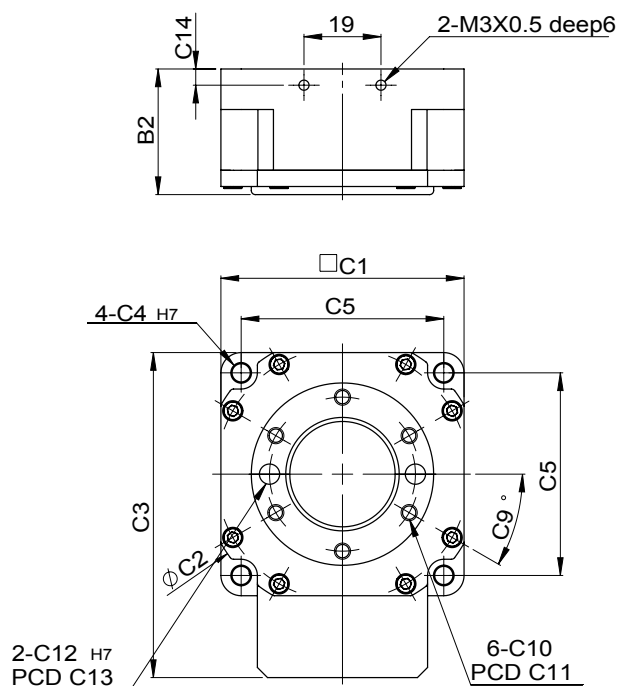
Model Code	60	85	110	135	200	250
<b>A</b>						
A1	8	14	14	14	19	19·24
A2	30·40·50	30·40·50	50·60·70	50·60·70	50·60·70	70·80·95·110
A3	M3·M4·M5	M3·M4·M5	M4·M5·M6	M4·M5·M6	M4·M5·M6	M5·M6·M8
A4	46·63·60	46·63·60	70·75·90	70·75·90	70·75·90	90·100·115·145
A5	46·55	46·55	64·70·80	64·70·80	64·70·80	92·110·130
A6	M4 x 0.7	M4 x 0.7	M5 x 0.8	M5 x 0.8	M5 x 0.8	M6 x 1.0
<b>B</b>						
B1	103	108.5	131	134	166.5	198·212.5
B2	31	36.5	45	48	70	84
B3	6	13	17	12	25	27.5
B4	10	10	12	15	20	25
B5	2	3	3	3	4	5
B6	45	70	95	115	170	218
B7	-	52	59	92	140	160
B8	26	33	40	63	100	120
B9	32	32	33.5	33.5	45.5	51·65.5
B10	4.5	5	6	6	10	8·22.5
B11	29.2	41.6	54	66.6	98.5	122
<b>C</b>						
C1	60	85	110	135	200	250
C2	69	87	112	138	202	254
C3	80.2	110.1	144	169.1	248.5	307
C4	4.5	5.5	6.8	9	11	13
C5	50	70	90	110	170	220
C6	-	4	5	5	8	10
C7	-	28	35	45	68	90
C8	-	38	49	60	85	110
C9	30	30	45	30	30	30
C10	M4 x 0.7	M4 x 0.7	M5 x 0.8	M5 x 0.8	M6 x 1.0	M8 x 1.25
C11	38	62.5	80	104	155	200
C12	5 deep6	5 deep6	5 deep5	5 deep5	8 deep8	8 deep14.5
C13	36	62.5	80	104	155	200
C14	4	4	5	5.5	9	9
C15	-	5	4.5	6	12	8

# Characteristic of GT-H 2-Stage Series

## GT-H



60#



## GT-H

## 2-Stage

Characteristic		Unit	Ratio	60H	85H	110H	135H	200H	250H
Output Table Supporting Bearing			50 · 100	/ Ball Bearing	/ Crossed Roller Bearing				
/ Rated Output Torque (Nominal output torque)	$T_{2N}$	Nm	50 · 100	4	14	26	34	183	334
/ Max. Acceleration Torque	$T_{2B}$	Nm	50 · 100	1.5 Times of Rated Output Torque					
/ Max. Output Torque / Emergency Stop Torque	$T_{2NOT}$	Nm	50 · 100	2 Times of Rated Output Torque					
/ Inertia Moment		kg.m <sup>2</sup>	50 · 100	$777 \times 10^{-7}$	$1203 \times 10^{-6}$	$1483 \times 10^{-6}$	$2772 \times 10^{-6}$	$27619 \times 10^{-6}$	$53551 \times 10^{-6}$
/ Output Permissible Speed		rpm	50 · 100	300	200	200	200	200	200
/ Torsional Backlash		arcmin	50 · 100	≤ 2	≤ 2	≤ 2	≤ 2	≤ 2	≤ 2
/ Lost Motion		arcmin	50 · 100	3(0.05°)					
Repetitive Positioning Accuracy		arcsec	50 · 100	±15(0.0042°)					
/ Permissible Thrust Load		N	50 · 100	350	900	1200	2200	4000	4000
/ Permissible Moment Load		Nm	50 · 100	7	18	24	45	120	100
/ Runout of Output Table Surface		mm	50 · 100	0.01	0.01	0.015	0.015	0.02	0.025
Runout of Output Table Inner / Outer Diameter		mm	50 · 100	0.01	0.01	0.015	0.015	0.02	0.025
/ Parallelism of Output Table		mm	50 · 100	0.02	0.02	0.025	0.025	0.03	0.035
/ Weight		Kg	50 · 100		1.7				